

Remote Monitoring Technologies

Robotix Q24M Secure 360°

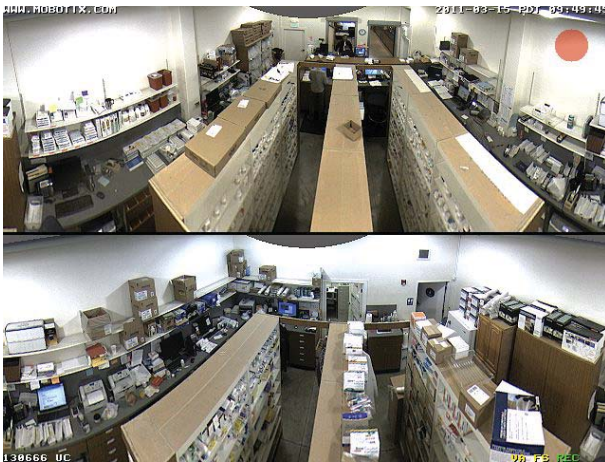
**FREE
Installation!**



**FREE
Installation!**

Call today
469-751-3547

Experience better coverage with fewer cameras



Multiple views from one camera



**Remote
Monitoring
Technologies**
be there from anywhere.

www.RMTcam.com
1513 Central Park Drive
Hurst, Texas 76053
(877) 587-2679
(469) 751-3547
www.RMTcam.com
info@RMTcam.com
TX License #BI6364



Free Standard Installation Special

Standard Installation (indoors only) Promo ends 01-31-2012

- Flexible installation hours and Days: 7am-7 pm, Monday-Saturday.
- All necessary wiring run externally (or in drop ceilings), not to exceed 150 ft per camera.
- Cross connection to broadband modem/router & POE adapter. (not supplied)
- On-site training and Q & A.

Cashier/Retail/Storefront Employee Safety Program

Wireless keyfob alert/alarm activation

24/7 Control Center video verified event response available

Remote Monitoring Technologies integrates the best in class IP-based devices and products for video surveillance, perimeter security, access control, wireless internet connectivity, VOIP communication, SIP telephony, video verified monitoring with real-time event response solutions and related services.

A complete security/surveillance/communication system in small package.

Q24M Hemispheric: 3.1 Megapixels (2048 x 1536)

The combination of a high-resolution 3 megapixel color sensor, an extremely wide-angle lens and an internal long-term storage (32 GB MicroSD card)* allow monitoring an entire room (10 m x 10 m) using only one single Q24 and saving the data as a high-resolution video sequence. Thanks to the camera's integrated distortion correction feature, image data can be corrected for perspective either in real time or in subsequent research allowing it to be displayed in an especially user-friendly way. While the viewer is able to freely navigate through the entire distortion-corrected image (also in surround or panorama view) using the virtual PTZ function to closely analyze specific image areas, the camera will continue to monitor the entire room in the background. The Q24 contains no mechanical moving parts and can be discreetly integrated into any environment thanks to its elegant design, compact size and wide range of mounting accessories. The Q24's weatherproof housing makes it suitable for outdoor use at temperatures ranging from -30°C to +60°C (-22°F to +140°F).

- Attractive, discrete appearance (white or black color available)
- Strong, rugged construction
- Standards-based Linux web server
- High Resolution three megapixel 360° video PTZ imaging
- Synchronized two-way audio (onboard microphone and speaker)
- Up to 32 Gb in-camera flash drive data recorder
- TCP/IP, USB interface, VOIP, SIP telephony, Power over Ethernet
- Intelligent sensor inputs (integrated thermometer)
- High security features
- Intelligent alerts and triggers
- Firmware upgradeable
- Control Center software included free



Limited time offer
FREE
Installation!



Q24 Standard Ø 160 mm
Q24 Vandalism Ø 160 mm

**Remote
Monitoring
Technologies**
be there from anywhere.

www.RMTcam.com
1513 Central Park Drive
Hurst, Texas 76053
(877) 587-2679
(469) 751-3547
www.RMTcam.com
info@RMTcam.com
TX License #BI6364

- Custom solution integration
- Site survey & system design
- IP device and sensor integration
- Intelligent traffic management
- Solar power integration
- LED lighting integration
- Real-time monitoring & response
- Contract projects
- Ongoing service and maintenance